

HEATPEX ARIA



Complete heat recovery
ventilation **system**



HEATPEX / ARIA

COMPLETE MVHR SYSTEM

ARIA
VITALE

3 FLOW RATES:
300 / 450 / 600 m³/h



OR



ARIA
VITALE

COMPACT

2 FLOW RATES:
250 / 350 m³/h

HEATPEX
ARIA



ARIA
FLAT500

ULTRA-LOW HEIGHT:
ONLY 5 cm!

OR



ARIA
ADURO

3 DIAMETERS:
125 / 160 / 200 mm

ARIA
CONNECT

3 DIAMETERS:
63 / 75 / 90 mm

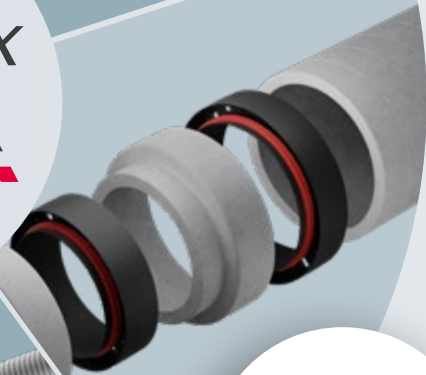




Table of contents

ARIA PLANNER 2.0	4
MVHR unit selection by property size	6

Mechanical ventilation with heat recovery **ARIA VITALE** and **ARIA VITALE compact** **NEW**

Product range	10
Key features and benefits	12
Design of ARIA VITALE MVHR units	16
Technical specifications	22

ARIA CONNECT and **ARIA FLAT 500** **23** air distribution ducting systems

Product range	26
Key features and benefits	28
Components	32
Installation accessories	46

ARIA ADURO insulated mass flow ductwork **47**

Key features and benefits	50
Components and accessories	54

LEARN MORE
ABOUT THE HEATPEX
ARIA SYSTEM ON
OUR WEBSITE

> **heatpex.pl**

ARIA PLANNER 2.0



Plan your heat recovery system in just minutes. Automatically generate a complete bill of materials.

3 SIMPLE STEPS

Design your heat recovery system with ease

1 Select national calculation standards for your country.

2 Add individual rooms, specify occupant numbers, define project zoning.

3 Select connection type: central or side.



Generate your bill of materials instantly.

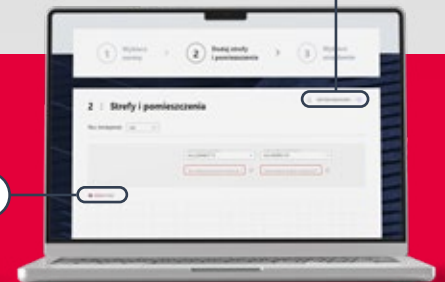
Why it's worth it:

- **Clear step-by-step process**
- **Automatic unit selection and airflow balancing** – ensuring balanced supply and extract ventilation
- Compliance with national standards
- Selection of air supply points (air vents) **for each room**

Additional module for professionals

UPLOAD PLAN

GRAPHIC EDITOR



Discussing project with an investor?

- **Well-prepared design** supports clear communication
- **Structured installation concept**
- **Defined plan** of action

Additional graphics module (free after login)

- **Create installation drawings** quickly, without specialist software
- More **detailed bill of materials** based on project
- **Complete design documentation** with material list

Benefits:

- **Time savings** through automation
- **Reduced risk** of design errors
- **Professional documentation** for customer



Recommended ventilation unit size according to EN-16798 ⁽¹⁾

	70 m ²	80 m ²	100 m ²	120 m ²	160 m ²	200 m ²	240 m ²	320 m ²	
FLOOR AREA									FLOOR AREA
NO. OF MAIN ROOMS⁽²⁾	3	3	5	6	7	8	9	10	NO. OF MAIN ROOMS
NO. OF BATHROOMS	1	1	2	2	2	3	3	3	NO. OF BATHROOMS
ADDITIONAL WET ROOMS⁽³⁾	0	0	0	1	2	2	2	3	ADDITIONAL WET ROOMS
									
	ARIA VITALE compact 250 m ³ /h	ARIA VITALE compact 250 m ³ /h	ARIA VITALE compact 350 m ³ /h				ARIA VITALE 450 m ³ /h		
									
		ARIA VITALE 300 m ³ /h	ARIA VITALE 450 m ³ /h	ARIA VITALE 450 m ³ /h	ARIA VITALE 450 m ³ /h	ARIA VITALE 600 m ³ /h	ARIA VITALE 600 m ³ /h	ARIA VITALE 600 m ³ /h	

(1) Each House has: 1 kitchen, 1 bathroom and 1 toilet in standard **(2)** Main rooms: bedrooms + living rooms **(3)** Additional wet rooms: all rooms with high moisture concentration and all additional toilets. / Floor areas and airflow values shown **for illustration only**. Final unit selection must be based on precise calculations in accordance with applicable national standards.

**ARIA
PLANNER
2.0**



For accurate system selection, use ARIA PLANNER 2.0. Select appropriate unit based on building area and volume. Supports full air distribution system planning. Includes ducts, distribution boxes, valves and required components.



Mechanical ventilation with heat recovery ARIA VITALE and ARIA VITALE compact

FUNCTIONALITY IN EVERY DETAIL



NEW



ARIA
VITALE
COMPACT

NEW





Discover **ARIA** **VITALE** MVHR Units – Ideal solution for modern homes

Ventilation – key to healthy living.

HEATPEX developed ARIA VITALE to deliver high indoor air quality with maximum efficiency. Designed in line with sustainable building principles, the unit combines durability, functionality and modern design. High-quality components ensure reliable performance and long service life.

Innovative EPP casing provides:

- / Lightweight construction
- / Excellent acoustic performance
- / Clean, aesthetic finish
- / Reduced environmental impact

ARIA VITALE SERIES:

2 models

5 airflow rates

Distinctive **design**

Functional solutions

Easy installation

Long-lasting **quality**



ARIA VITALE

Heat recovery ventilation unit

MASS

27.5 kg

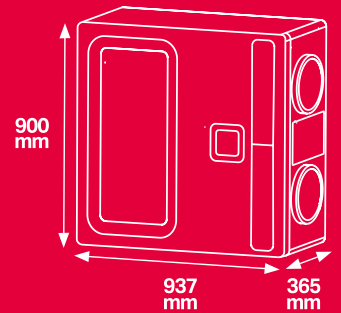


40% lighter
than comparable
units on market

A+

H/W/D DIMENSIONS

900 / 937 / 365 mm



reddot winner 2023

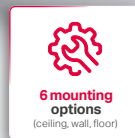


DESIGN
AWARD
2023



/// FLOW RATES

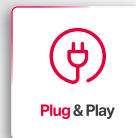
300 / 450 / 600 m³/h



**6 mounting
options**
(ceiling, wall, floor)



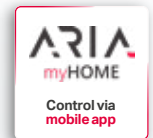
Wi-Fi
Remote control



Plug & Play



100% bypass



ARIA
myHOME
Control via
mobile app

FEATURES

PLATINUM Enthalpy

Enthalpy heat exchanger
Temperature sensor
CO₂ sensor
Humidity sensor

PLATINUM^{CF} Enthalpy

Enthalpy heat exchanger
Temperature sensor
CO₂ sensor
Humidity sensor
Constant Flow (CF) function

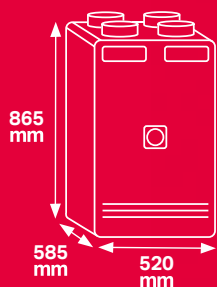
ARIA VITALE

COMPACT

Compact heat recovery ventilation unit

DIMENSIONS H/W/D

865 / 520 / 585 mm



A+

MASS

20 kg



40% lighter
than comparable
units on market

IKONA'25
DOBRY
WZÓR

FEATURES



/// FLOW RATES

250 / 350 m³/h

SILVER

Temperature sensor

PLATINUM^{CF} Enthalpy

Enthalpy heat exchanger
Temperature sensor
CO₂ sensor
Humidity sensor
Constant Flow (CF) function

Mounting options



ceiling



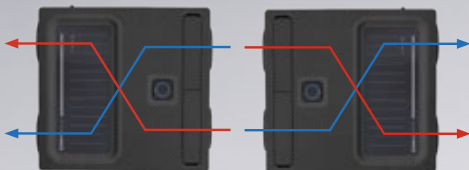
wall



floor

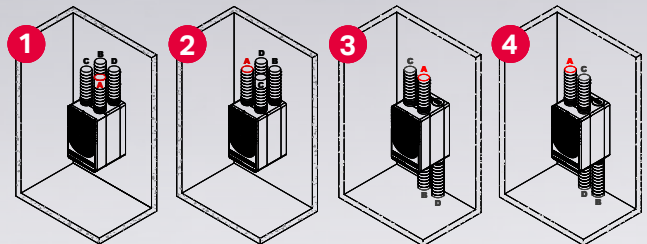


6 installation options ARIA VITALE



Right- or left-hand installation depending on air intake position - control panel can be rotated

4 connection options ARIA VITALE compact



A. Fresh air B. Supply air C. Extract air D. Exhaust air

Quiet and airtight

ARIA VITALE units feature laser-enhanced **EPP casing** with wall thickness up to **50 mm (40 mm** in ARIA VITALE compact). Thermally bonded EPP structure, increased wall thickness, EPP spigots and optimised hardware configuration form a fully integrated casing system. This design delivers **exceptional airtightness, eliminates thermal bridges and ensures quiet**, stable operation – particularly important for night-time comfort.

50mm

thickness of
EPP walls
in ARIA VITALE

Sound pressure
level from

42.1 dB(A)

Flexible and simple installation

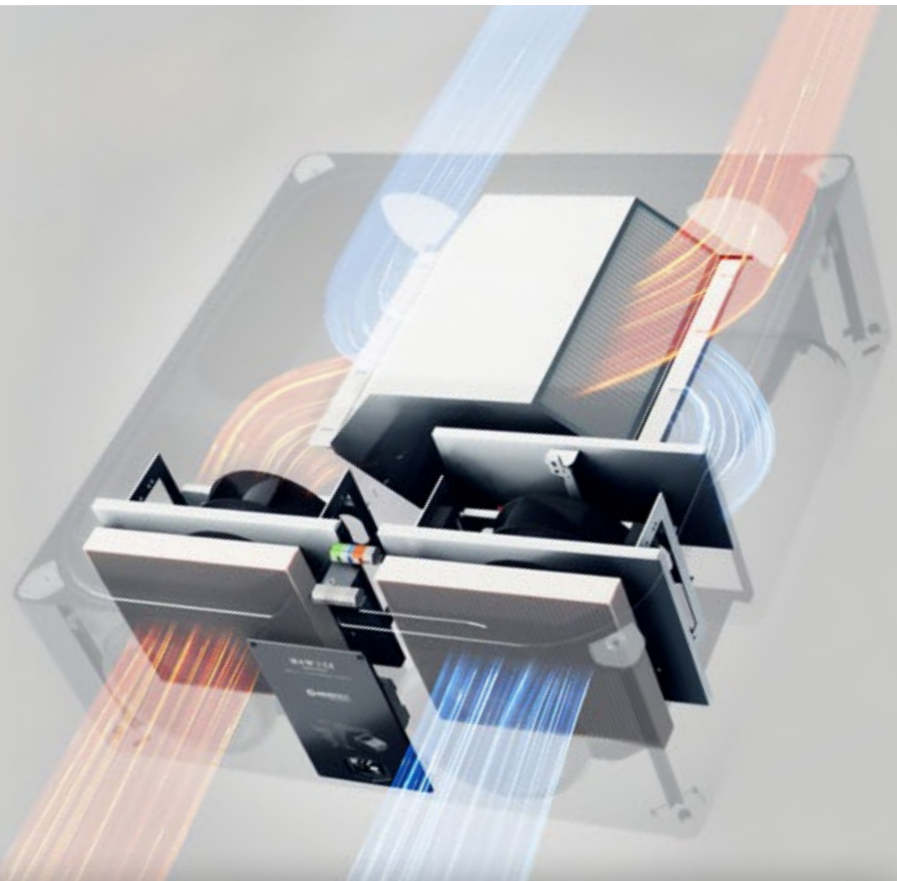
ARIA VITALE and ARIA VITALE compact packaging includes custom mounting brackets and built-in spirit levels (ARIA VITALE only). For easier installation, use 1:1 scale mounting template printed on back of packaging.



Efficient and energy-saving

High-efficiency heat exchangers enable heat recovery of up to 95%. Intelligent control system with weekly programming supports energy savings of up to 30% compared to manual operation.

Quick-access functions such as Holiday Mode reduce unit operation during absence and optimise energy consumption.



ENERGY
EFFICIENCY
UP TO

95%

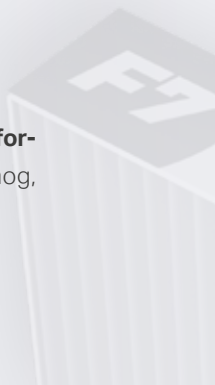
ENERGY
SAVINGS
UP TO

30%



Highest indoor air quality for you and your family

ARIA VITALE units are equipped with **high-performance cartridge filters** that protect against smog, bacteria, viruses and pollen.



Antibacterial and antiviral counterflow enthalpy heat exchanger

Counterflow enthalpy exchanger with antibacterial and antiviral membrane. **Protection against viruses (including SARS-CoV-2), bacteria, mould, unpleasant odours and biological pollutants.**

Durable polymer membrane provides:

- **High thermal conductivity** and efficient moisture transfer
- **Resistance** to acids, alkalis and salts for stable long-term operation
- **High tear and puncture resistance**
- **Excellent resistance to environmental influences** and temperature fluctuations (-25°C to +50°C)
- **Low air permeability**



FILTERS FOR ARIA VITALE



FILTERS FOR ARIA VITALE compact



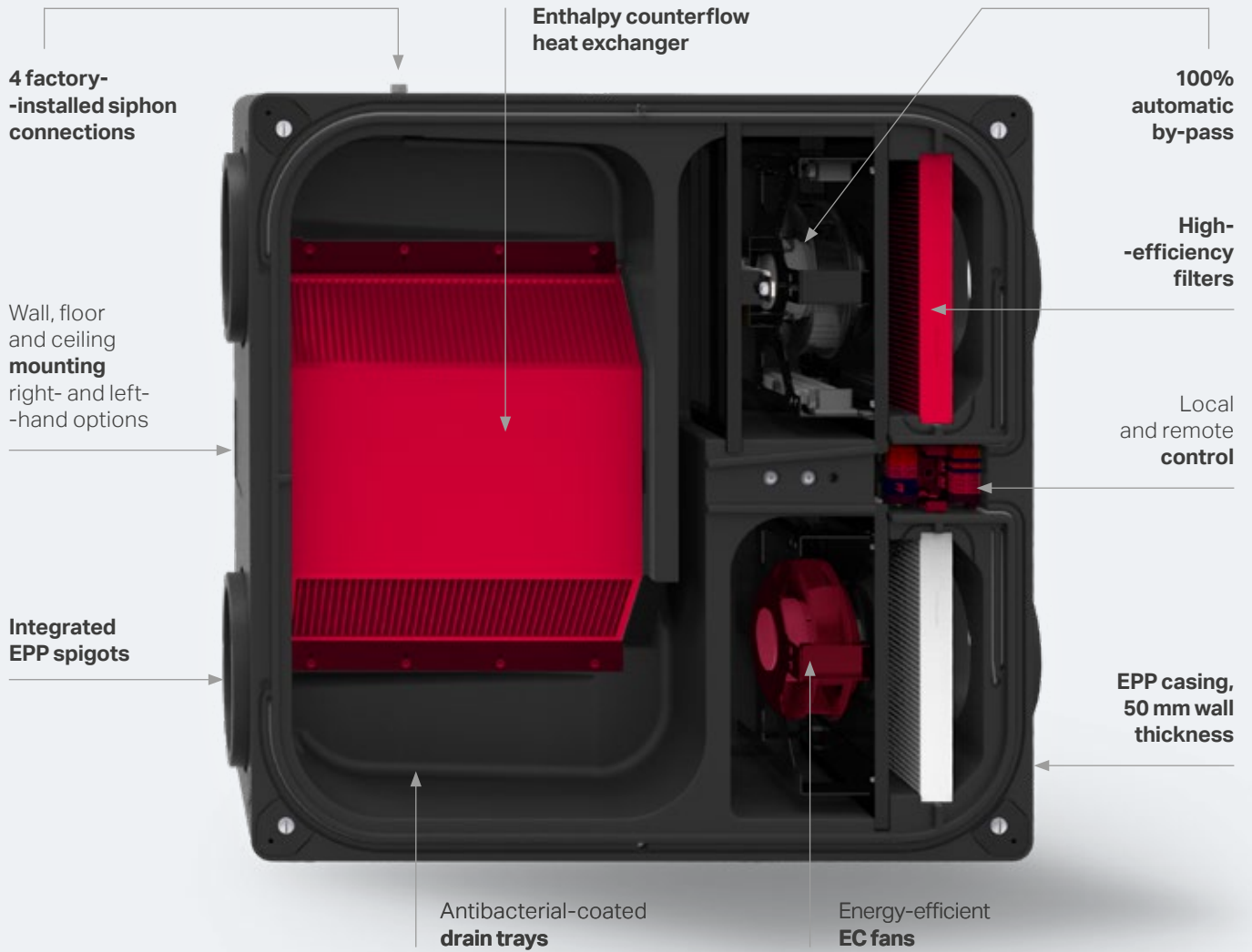
EXTRACT AIR: **M5** ISO PM₁₀ 50%

FRESH AIR: **F7** ANTI-SMOG FILTER **or** **M5** ACTIVATED CARBON FILTER

F7 ISO ePM₁ 70% (ePM₁ 73.27% | ePM_{2.5} 80.23% | ePM₁₀ 91.94%) **or** **M5** with activated carbon

ARIA VITALE

ARIA VITALE design features



STANDARD FEATURES OF ARIA VITALE

Wi-Fi / wireless connectivity

Antifrost system with preheater

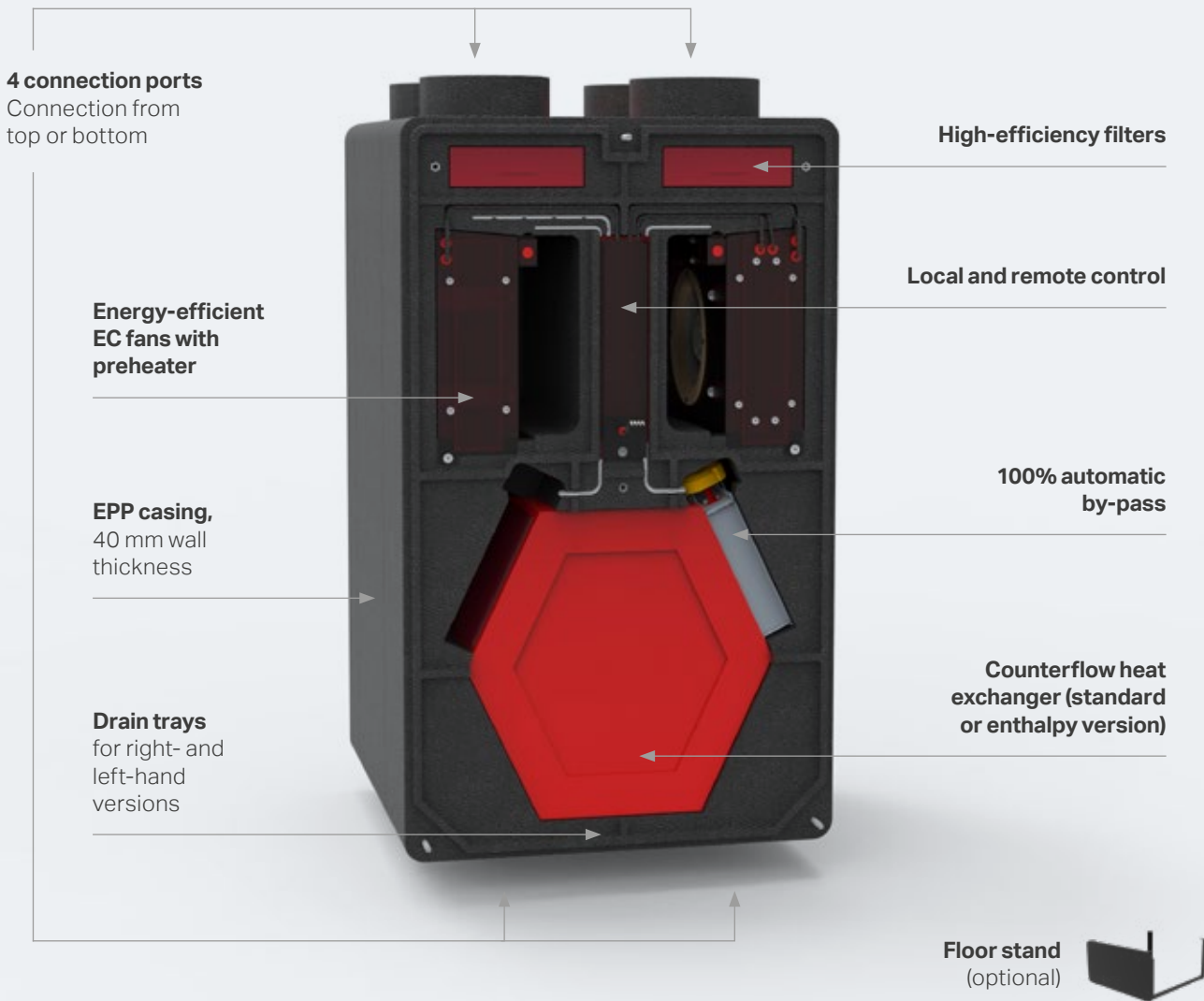
100% bypass

Flat glass touch screen control panel

Mounting brackets and floor supports



ARIA VITALE compact design features



STANDARD FEATURES OF ARIA VITALE compact

Wi-Fi / wireless connectivity

Antifrost system with preheater

100% bypass

Flat glass touch screen control panel

Mounting brackets

Removable **control panel**

The glass **control panel can be removed from the unit and installed on a wall in a convenient location**, such as a living area. Provides easy access to system settings without needing to reach the unit itself – particularly useful when the MVHR unit is installed in an attic, garage or technical room. A dedicated blanking panel is included to replace the control interface on the unit once removed.

Mounting options

Wall-mounted **or** Mounted on unit



Simple & **intuitive operation**

Pre-defined **operating modes**



**HOLIDAY
MODE**



**PARTY
MODE**

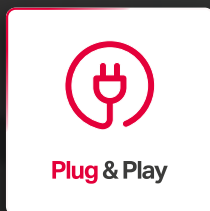


**AUTOMATIC
MODE**

Touch control panel with intuitive interface. Pre-defined operating modes and integrated sensors automatically respond to changing air conditions, optimising comfort, noise level and energy consumption.

Advanced control

Advanced settings and control options available via **ARIA myHOME app** for smartphones and computers. **Wi-Fi connectivity as standard.** Integration with **Smart Home systems via Modbus RTU** protocol.



Plug & play philosophy

Connect to power supply – ready to operate.



Hidden functionalities

ARIA VITALE and **ARIA VITALE compact** units include practical, user-focused features.

1. Washable service note panel

Record service inspections and filter replacement dates directly on the unit.

2. Removable control panel

Control panel can be relocated to wall for convenient daily access.



ARIA
VITALE

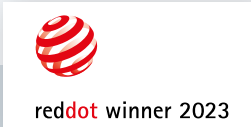
3. Functional filter access panels

Filter covers also serve as storage space for marker pen and basic service tools.



ARIA
VITALE
COMPACT





Timeless **design**

Casing made of laser-enhanced **expanded polypropylene (EPP)** – **lightweight**, **durable** and **highly resistant**. Surface texture enhances **aesthetic appeal**, while integrated grooves add depth and **visual dynamism**. The **refined geometry** makes the unit appear more compact and **visually lighter**.



Technical specifications

HEATPEX	ARIA VITALE			ARIA VITALE compact	
	300	450	600	250	350
Nominal air flow	300 m ³ /h	450 m ³ /h	600 m ³ /h	250 m ³ /h	350 m ³ /h
Dimensions (H x W x D)	900 mm / 937 mm / 365 mm			865 mm / 520 mm / 585 mm	
Mass	27.5 kg (Platinum) / 29.9 kg (Platinum CF)			20 kg	
Diameter of connections	200 mm			125 mm	
Condensate drain diameter	32 mm			32 mm	
IP protection rating	IP 40			IP 40	
Power supply	230V / 50Hz			230V / 50Hz	
Rated power of fans	2 x 45 W	2 x 95 W	2 x 177 W	2 x 90 W	
Preheater power	1000 W	2000 W	2000 W	500 W	
Filter class	ePM ₁ 70% (F7) – supply air ePM ₁₀ 50% (M5) – exhaust air			ePM ₁ 70% (F7) – supply air ePM ₁₀ 50% (M5) – exhaust air	
Heat exchanger	Counterflow enthalpy			Counterflow (Silver), counterflow enthalpy (Platinum CF)	
Thermal efficiency of heat recovery	86.5 / 84.2% (CF)	84.7 / 83.1% (CF)	83.9 / 82.3% (CF)	88,3 %	85 %
Compression at nominal flow rate	180 Pa	165 Pa	165 Pa	140 Pa	130 Pa
Housing material	EPP			EPP	
Sensors	Temperature, humidity and CO ₂ (Platinum) Temperature, humidity and CO ₂ , constant flow (Platinum CF)			Temperature (Silver) / Temperature, humidity and CO ₂ , constant flow (Platinum CF)	
Air flow control	Automatic flow regulation and balancing air (Platinum CF) / Traditional, fully smooth fan speed control (Platinum)			Automatic adjustment and balancing of air flows (Platinum CF) / Traditional, fully smooth adjustment of fan rotation speed (Silver)	
100% automatic bypass	YES			YES	
Anti-freeze system with heater	YES			YES	
Wi-Fi / wireless connection	YES			YES	
Factory gear settings	1	2	3	Party mode	Holiday mode
	35%	55%	75%	100%	25%
ARIA VITALE 300 [m ³ /h]	105	165	225	300	75
ARIA VITALE 450 [m ³ /h]	158	248	338	450	113
ARIA VITALE 600 [m ³ /h]	210	330	450	600	150
ARIA VITALE compact 250 [m ³ /h]	88	138	188	250	63
ARIA VITALE compact 350 [m ³ /h]	123	193	263	350	88



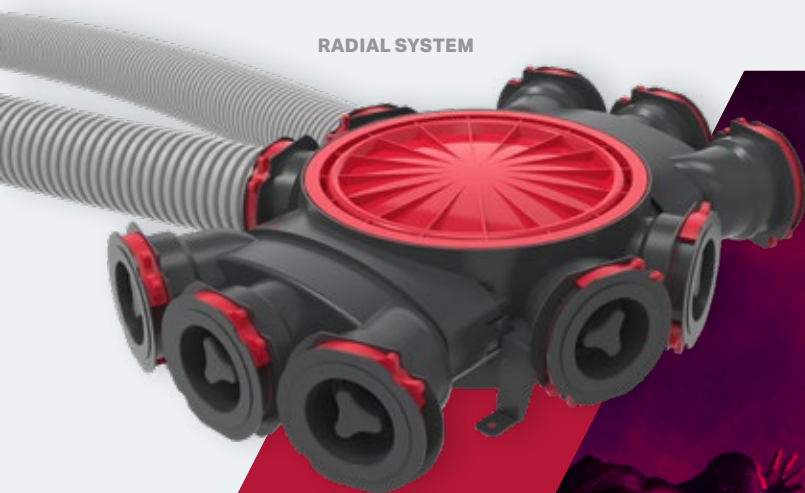
ARIA
CONNECT

ARIA
FLAT500

ARIA CONNECT and ARIA FLAT 500 air distribution ducting systems

AIR DISTRIBUTION SYSTEMS
FOR SINGLE-FAMILY HOUSING

RADIAL SYSTEM



ATC1



100%

ANTIBACTERIAL

ONE[®]
CLICK
technology

FLAT SYSTEM





Optimised airflow throughout the building

Enables precise adjustment of supply and extract air volumes according to the size and function of each room.



Optimisation of material use and costs

More economical system design thanks to the use of smaller duct diameters where higher airflow rates are not required.

Expandability and flexible configuration

Different duct diameters and appropriately selected distribution boxes allow easy system expansion or layout modifications without replacing the entire installation.

Easy and quick installation

Smaller duct dimensions allow easier installation in screed, floors or ceilings – particularly beneficial in low-ceiling residential buildings.



Flexible installation design

Combination of different diameters allows easy adaptation to building conditions, including limited installation space in ceilings or walls.

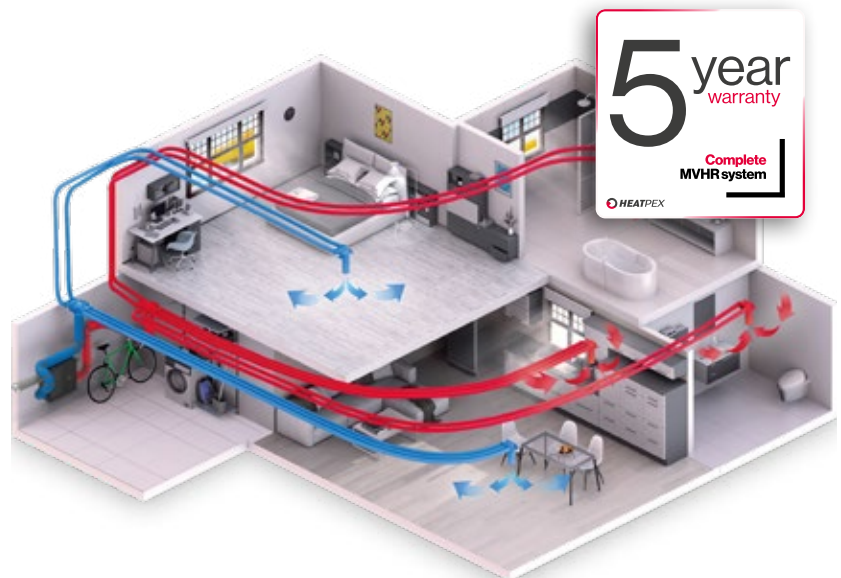
Discover the benefits of **ARIA CONNECT** and **ARIA FLAT 500** air distribution systems

Heat recovery in single-family homes

HEATPEX offers **modern ventilation and heat recovery distribution systems**: ARIA CONNECT (radial) and ARIA FLAT 500 (flat). ARIA CONNECT features traditional round ducts, while ARIA FLAT 500 uses flat ducts designed for modern interiors where space and aesthetics are important. Both systems are manufactured using **OneClick® technology** for quick and easy installation. System planning is simplified with the **free ARIA PLANNER selection software**, which automatically calculates material requirements.

Both systems provide:

- / Energy-efficient installation
- / Clean and hygienic air supply
- / High user comfort
- / Proprietary OneClick® technology ensures fast, tool-free assembly.
- / ATC1 airtightness class guarantees low operating costs.
- / Ultra-Fresh® technology eliminates up to 99.9% of bacteria from the air, supporting a healthy indoor environment.



ARIA CONNECT

Radial system

Multiple diameters, one unified solution



Complete air distribution system:

only **6** basic components

Boxes



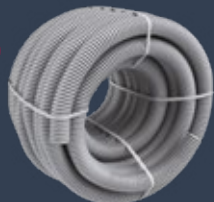
Connectors



Couplings



Semi-rigid ventilation duct

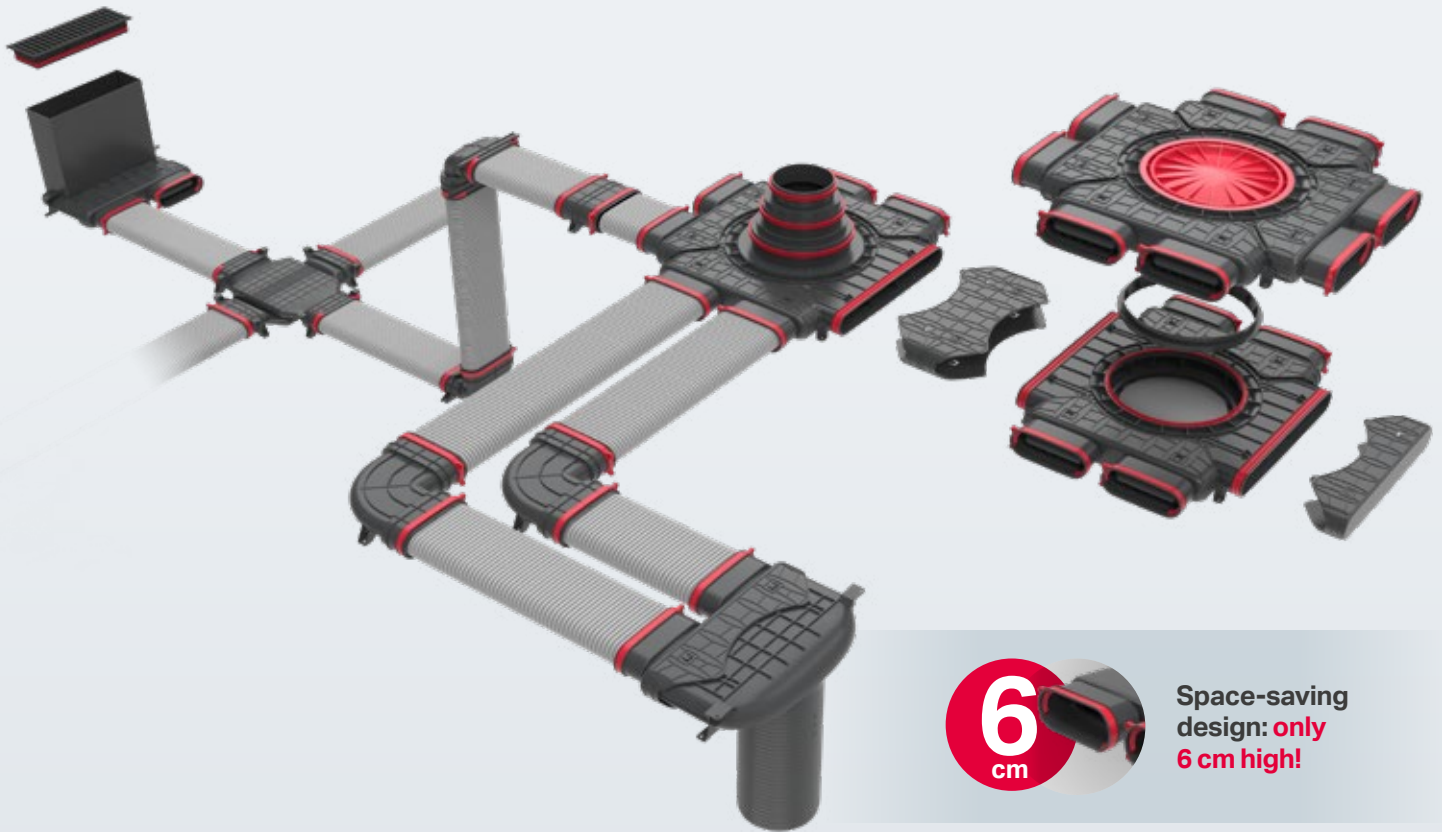


L=50m



Flat system

Expanded possibilities



6
cm

Space-saving design: **only 6 cm high!**

Combine radial and flat systems for total flexibility

Installation made easy: **Everything clicks into place!**

Boxes



Connector



Couplings



Ducting connector, elbows and bypass



Ventilation flat channel



L=25m L=50m

Modular design, **total flexibility**

ARIA
CONNECT



ARIA
FLAT500



Vertical connection

(Modular design allows for multiple box configurations)

- 63 mm system
24 connections
- 75 mm system
20 connections
- 90 mm system
16 connections

System
ARIA FLAT 500
16 connections



OR

OR

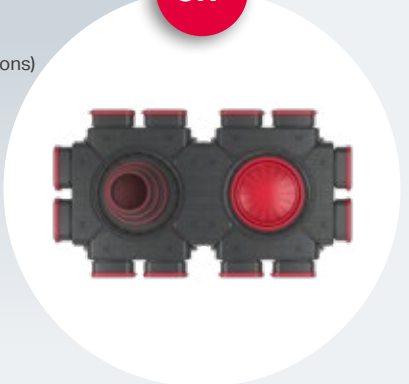


Horizontal connection

(Modular design allows for multiple box configurations)

- 63 mm system
16 connections
- 75 mm system
14 connections
- 90 mm system
12 connections

System
ARIA FLAT 500
12 connections



Unified distribution: integrate radial and flat systems

Easily combine radial and flat components to **suit any installation.**



Installation **faster**
than ever before



OneClick® technology:
Intuitive assembly,
engineered for speed

OneClick® technology is a proprietary connection system developed by HEATPEX. It allows all heat recovery **components to be joined without tools**. Should your plans change during installation, **parts can be easily disconnected and reused with no risk of damage**.



EN 17192

Highest airtightness
rating (ATC 1)

Quiet, energy-efficient
performance



Patented OneClick® technology ensures **highest tightness class – ATC 1 per EN 17192**. Delivers **three times higher airtightness** than Class D. Superior seal **achieved without additional tapes or sealants**. **Only system on market** meeting this stringent standard since 2019. Verified by **independent laboratory testing**. Ensures **whisper-quiet operation and maximum energy savings** for end-user.



ATC1

Low pressure losses and low noise levels

Carefully engineered system components and **smooth inner duct surfaces** minimise pressure losses.



Optimised airflow distribution and **double-wall ducts reduce noise generated by moving air** – particularly important during night-time operation.



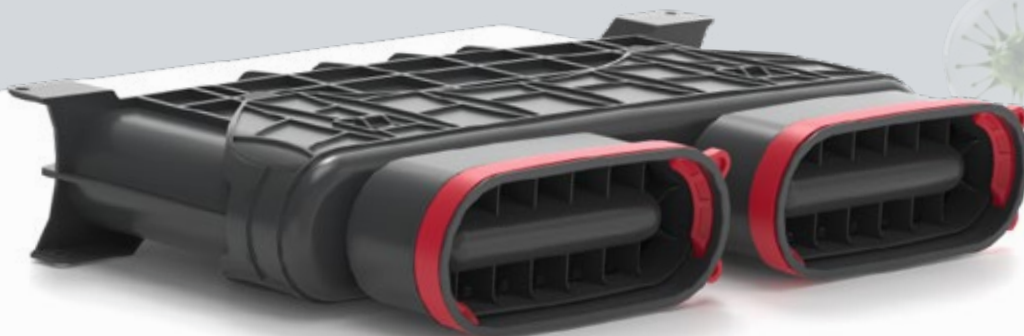
Antibacterial protection as standard

Clean, fresh air – every day

HEATPEX ARIA ducts and system components are manufactured using **Ultra-Fresh® antibacterial additive**. Ensures **99.9% antibacterial activity**, confirmed by independent laboratory testing in accordance with **ISO 22196**. Phosphate-silver glass-based technology, used in over 300 global brands. **Smooth internal duct surfaces minimise accumulation of contaminants.**



100%
**ANTIBACTERIAL
PROTECTION**





Durability & strength

System components manufactured from **durable, lightweight polypropylene (PP)**, ensuring **long-term reliability without risk of corrosion or mechanical damage.**

Ducts, distribution boxes and connectors **suitable for installation in concrete.** Important: **Polypropylene (PP) is considered a health-safe material and is 100% recyclable.**



Compact size

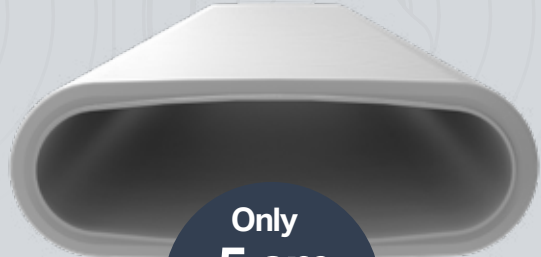
Compact dimensions of ARIA CONNECT and ARIA FLAT 500 systems **allow installation within ceiling insulation, roof structures or suspended ceilings.**



Only 9.5 cm
PLENUM BOX HEIGHT

Only 10.6 cm
DISTRIBUTION BOX HEIGHT

ARIA CONNECT RADIAL SYSTEM



Only 5 cm
FLAT CHANNEL HEIGHT

Only 6 cm
OVERALL FLAT SYSTEM HEIGHT

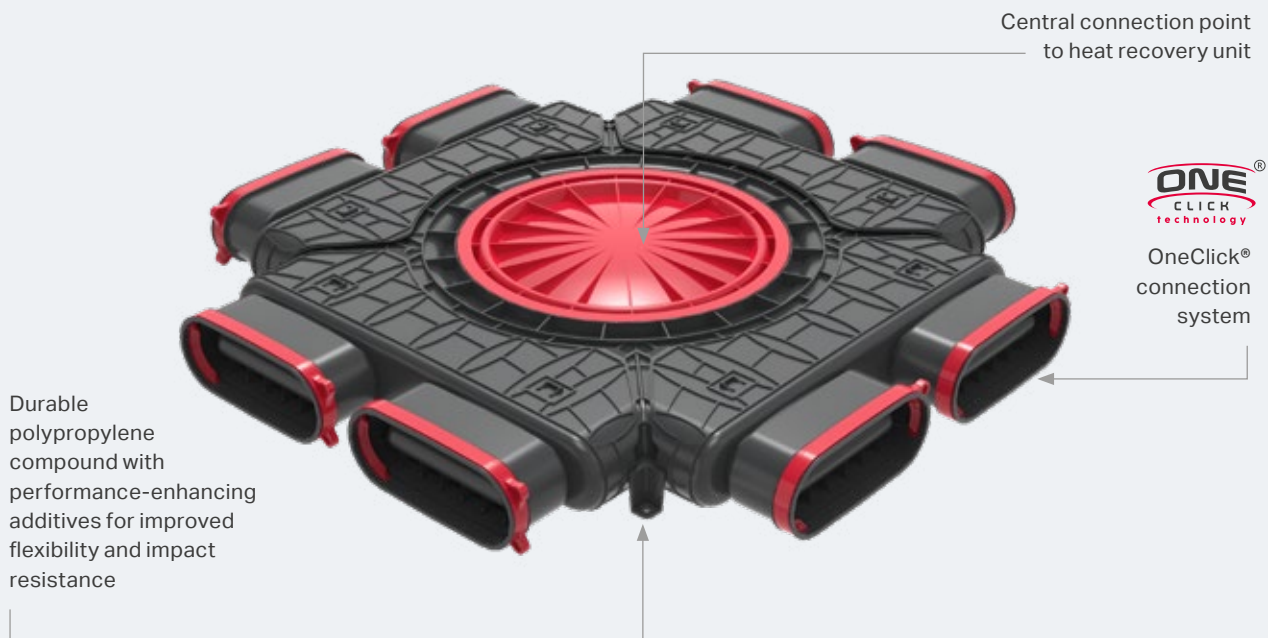
ARIA FLAT 500 FLAT SYSTEM

● **FLAT 500 SYSTEM**

ARIA FLAT 500 flat system distribution box

NEW

Distribution box with OneClick® technology, designed for connection to the heat recovery unit. A complete ventilation system consists of at least two boxes: supply box – distributes fresh air to rooms and extract box – collects stale air.



Vertical connection

16 connections



Horizontal connection

12 connections



Flat and radial system integration

System	Length	Width	Height	Number of 50 mm connections	Mass	Material	Airtightness class	Catalogue number
FLAT 500	573 mm	573 mm	62 mm	8	1.63 kg	PP	ATC1	54000000101W

Supplied fully assembled with factory-fitted plugs and seals. Securely packaged. All unused ports must remain sealed to maintain airtightness.

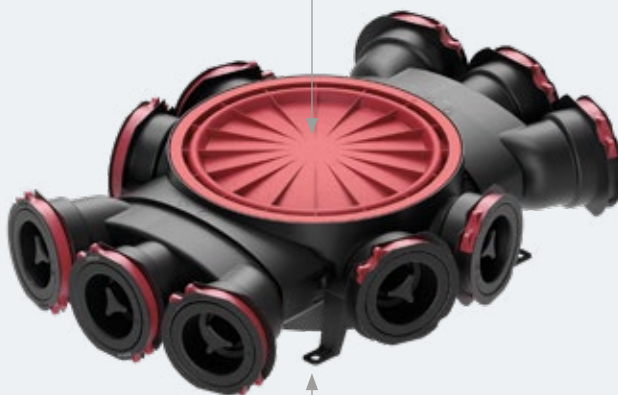
● RADIAL SYSTEM 63 mm / 75 mm / 90 mm

ARIA CONNECT radial system distribution box

Central connection point
to heat recovery unit



OneClick®
connection
system



Durable polypropylene compound with performance-enhancing
additives for improved flexibility and impact resistance



Vertical connection

63 mm system – 24 connections
75 mm system – 20 connections
90 mm system – 16 connections



Horizontal connection

63 mm system – 16 connections
75 mm system – 14 connections
90 mm system – 12 connections



SYSTEM
63
mm



SYSTEM
75
mm



SYSTEM
90
mm



Flat and radial system integration

System	Length	Width	Height	Number of connections	Mass	Material	Airtightness class	Catalogue number
63 mm	532 mm	421 mm	106 mm	12	1.56 kg	PP	ATC1	52306300100W
75 mm	498 mm	360 mm	106 mm	10	1.47 kg	PP	ATC1	52300000100W
90 mm	522 mm	470 mm	106 mm	8	1.85 kg	PP	ATC1	52309000100W

Supplied fully assembled with factory-fitted plugs and seals. Securely packaged. All unused ports must remain sealed to maintain airtightness.

● FLAT 500 SYSTEM

ARIA FLAT 500 flat system plenum boxes

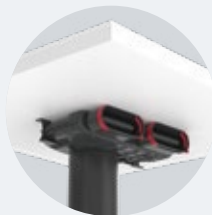
Plenum box with OneClick® technology, designed for connection of supply or extract diffusers.

For linear diffusers

For round diffusers



SUITABLE FOR INSTALLATION:
 · IN CEILING INSULATION
 · WITHIN FLOOR BUILD-UP
 · IN SUSPENDED CEILINGS



System	Type of box	Length	Width	Height	Number of connections	Mass	Material	Airtightness class	Catalogue number
FLAT 500	Plenum	258 mm	380 mm	361 mm	2	0.91 kg	PP	ATC1	54000000101W
FLAT 500	Linear plenum	271 mm	337 mm	300 mm	2	0.30 kg	PP	ATC1	54030010001W

Supplied fully assembled with factory-fitted plugs and seals. Securely packaged. All unused ports must remain sealed to maintain airtightness.

● RADIAL SYSTEM 63 mm / 75 mm / 90 mm

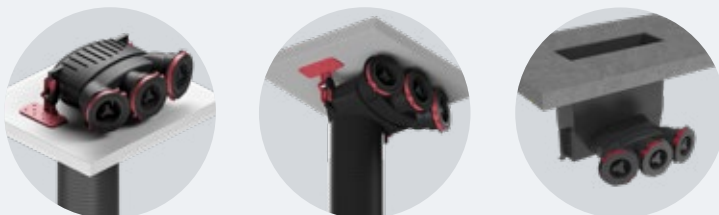
ARIA CONNECT radial system plenum boxes

For **linear** diffusers

For **round** diffusers



SUITABLE FOR INSTALLATION:
 · IN CEILING INSULATION
 · WITHIN FLOOR BUILD-UP
 · IN SUSPENDED CEILINGS



System	Type of box	Length	Width	Height	Average approach under anemostat (internal)	Number of connections	Mass	Connector length 125 mm	Material	Airtightness class	Number catalogue
63 mm	Plenum	265 mm	349 mm	446 mm	125 mm	4	0.86 kg	349 mm	PP	ATC1	52346300100W
63 mm	Linear plenum	271 mm	337 mm	300 mm	125 mm	4	1.15 kg	349 mm	PP	ATC1	52346300400W
75 mm	Plenum	248 mm	315 mm	447 mm	125 mm	3	0.75 kg	349 mm	PP	ATC1	52337500100W
75 mm	Linear plenum	271 mm	337 mm	300 mm	125 mm	3	1.15 kg	349 mm	PP	ATC1	52337500400W
90 mm	Plenum	263 mm	315 mm	447 mm	125 mm	2	0.78 kg	349 mm	PP	ATC1	52329000100W
90 mm	Linear plenum	271 mm	337 mm	300 mm	125 mm	2	1.15 kg	349 mm	PP	ATC1	52329000400W

Supplied fully assembled with factory-fitted plugs and seals. Securely packaged. All unused ports must remain sealed to maintain airtightness.

● RADIAL SYSTEM 63 mm / 75 mm / 90 mm

● FLAT 500 SYSTEM

Central main connection

For radial and flat systems

Central connector for primary supply or extract duct (Ø 125 / 160 / 200 mm) to the distribution box. Compatible with ARIA ADURO insulated mass flow ducts. Allows use of both round and flat duct systems and ensures efficient transfer of high air volumes to and from the MVHR unit.



Mounted directly to main socket of the distribution box. / Supports duct diameters: Ø 125 / 160 / 200 mm (with seals included), Ø 150 / 180 mm (without seals) / Seals included for 125, 160 and 200 mm connections in both round and flat systems. / Compatible with intermediate spigots for Ø 150 and Ø 180 mm systems (without seals), SPIRO and other standard radial ducts.

System	Height	Maximum diameter	Material	Mass	Airtightness class	Catalogue number
63 / 75 / 90 mm / FLAT 500	171 mm	249 mm	PP	0.29 kg	ATC1	52410900100W

● RADIAL SYSTEM 63 mm / 75 mm / 90 mm

Side main connection 125/160

For radial system

Side connector for primary supply or extract duct Ø 125 / 160 mm. Compatible with ARIA ADURO insulated mass flow ducts. Designed to transfer high air volumes to and from the MVHR unit.



Installed in the elliptical socket of the distribution box in place of a 3 × 75 mm or 2 × 90 mm module. / Includes seals for Ø 125 and Ø 160 mm connections to ensure airtight and secure installation. / Compatible with SPIRO and other standard radial ducts.

System	Length	Width	Height	Material	Mass	Airtightness class	Catalogue number
63 / 75 / 90 mm	284 mm	216 mm	167 mm	PP	0.26 kg	ATC1	52411000100W

● RADIAL SYSTEM 63 mm / 75 mm / 90 mm

● FLAT 500 SYSTEM

Vertical coupling

For **radial** and **flat** systems

Coupling for vertical connection of two or more distribution boxes.

Integrated grip tabs for easier installation



Mounted in the central socket of the distribution box, with universal compatibility: Ø 63 / 75 / 90 mm systems and FLAT 500. /

Vertical stacking increases available connections: Ø 63 mm system – 24 connections, Ø 75 mm system – 20 connections, Ø 90 mm system – 16 connections / Supplied with integrated plugs for easy installation. / Airtightness class: ATC1 (PN-EN 17192)

System	Type	Length	Width	Height	Material	Mass	Airtightness class	Catalogue number
63 / 75 / 90 mm / FLAT 500	Vertical coupling	249 mm	249 mm	31 mm	PP	0.06 kg	ATC1	52411200100W

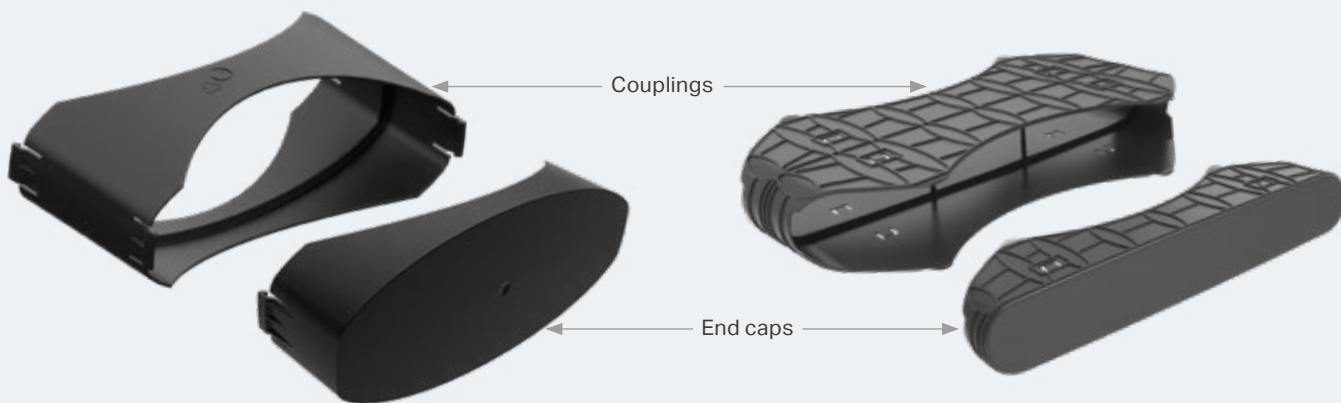
● RADIAL SYSTEM 63 mm / 75 mm / 90 mm

● FLAT 500 SYSTEM

Horizontal coupling and end cap

For **radial** and **flat** systems

Coupling for horizontal connection of two or more distribution boxes.



Radial system



Flat system

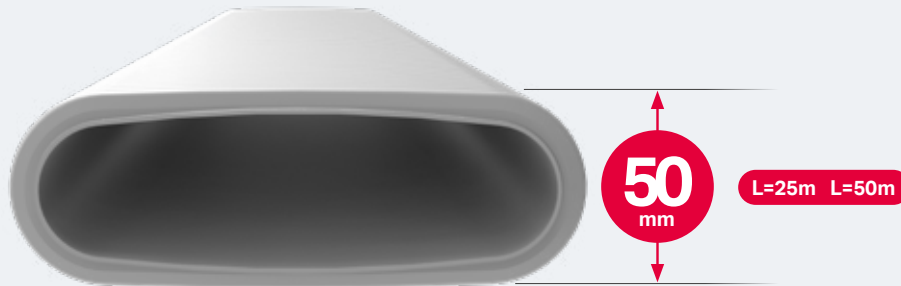


System	Type	Length	Width	Height	Material	Mass	Airtightness class	Catalogue number
63 / 75 / 90 mm	Horizontal coupling	216 mm	110 mm	92 mm	PP	0.07 kg	ATC1	52411100100W
FLAT 500	Horizontal coupling	360 mm	195 mm	62 mm	PP	0.185 kg	ATC1	54011100100W
System	Type	Width	Height	Depth	Material	Mass	Airtightness class	Catalogue number
63 / 75 / 90 mm	Distribution box end cap for wall mounting	212 mm	92 mm	55 mm	PP	0.06 kg	ATC1	52001100100W
FLAT 500		99 mm	363 mm	62 mm	PP	0.13 kg	ATC1	54001100100W

● FLAT 500 SYSTEM

Antibacterial and antistatic flat ducting and connectors

NEW



Flat ducting connector

Vertical elbow

Horizontal elbow

Crossing connector for intersecting ducts or passing over building services



Ultrafresh® additive – with antibacterial activity **up to 99.9%**. / Antistatic properties reduce dust and contaminant build-up. / **High flexibility** and **impact resistance** (up to 500 N compression strength). / **Smooth internal surface** minimises resistance and facilitates cleaning. / **Low noise levels.** / High airtightness class – ATC1 (PN-EN 17192). / **Patented design.**

System	Type	Width	Height	Coil length	Material	Mass	Airtightness class	Catalogue number
FLAT 500	Flat ducting	141 mm	50 mm	25 m	PE-HD	0.437 kg/m	ATC1	52050002500W
FLAT 500	Flat ducting	141 mm	50 mm	50 m	PE-HD	0.437 kg/m	ATC1	52050005000W
System	Type	Length	Width	Height	Material	Mass	Airtightness class	Catalogue number
FLAT 500	Flat ducting connector	176 mm	114 mm	60 mm	PP	0.144 kg	ATC1	54013300100W
FLAT 500	Vertical elbow	183 mm	120 mm	122 mm	PP	0.154 kg	ATC1	54013500100W
FLAT 500	Horizontal elbow	231 mm	231 mm	60 mm	PP	0.224 kg	ATC1	54013400100W
FLAT 500	Crossing connector	384 mm	200 mm	60 mm	PP	0.128 kg	ATC1	54013600100W



Each connector supplied with two seals to ensure airtight installation.

● RADIAL SYSTEM 63 mm / 75 mm / 90 mm

Antibacterial and antistatic radial ventilation ducting



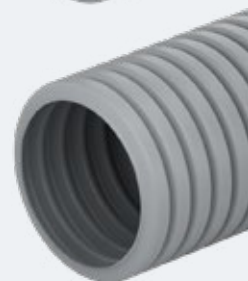
63 mm



75 mm



90 mm



Ultra-Fresh® antibacterial inner layer with 99.99% efficiency. / Antistatic properties reduce dust and contaminant build-up. / **High flexibility and impact resistance** (compression strength up to 500 N). / **Smooth internal surface** minimises airflow resistance. / **Low noise emission.** / Highest airtightness class – **ATC1 (PN-EN 17192).**

System	Dimensions			Material	Mass	Airtightness class	Catalogue number
	External diameter	Internal diameter	Coil length				
63 mm	64 mm	52 mm	50 m	PE-HD	0.240 kg/m	ATC1	52006305000W
75 mm	76 mm	63 mm	50 m	PE-HD	0.273 kg/m	ATC1	52007505000W
90 mm	91 mm	75 mm	50 m	PE-HD	0.400 kg/m	ATC1	52009005000W

● RADIAL SYSTEM 63 mm / 75 mm / 90 mm

● FLAT 500 SYSTEM

Supply and extract air diffusers 125 mm damper / silencer

Polyethylene foam damper with integrated noise attenuation. Regulates airflow within the ventilation system and prevents unintended adjustment.



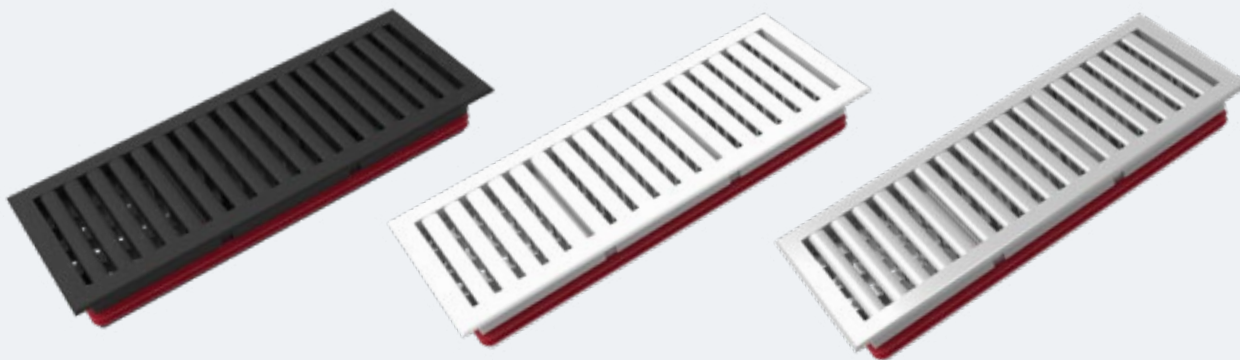
Type	Nominal diameter of the flange	External diameter	Height	Material	Mass	Catalogue number
Supply air damper	125 mm	160 mm	60 mm	Steel	0.5 kg	52002100100W
Extract air damper	125 mm	160 mm	60 mm	Steel	0.5 kg	52002200100W
Type	Diameter	Height	Material	Mass	Catalogue number	
125 mm damper / silencer	128 mm	50 mm	EVA	0.05 kg	52002400100W	

● RADIAL SYSTEM 63 mm / 75 mm / 90 mm

● FLAT 500 SYSTEM

Linear supply and extract grilles

Universal grille for wall or floor installation. Slots can be arranged vertically or horizontally to suit design and airflow requirements.



SAMPLE ARRANGEMENTS



Universal installation: wall or floor / **Mounted in linear plenum box** – ARIA CONNECT (63 / 75 / 90 mm) or ARIA FLAT 500 / Adjustable **integrated damper** for airflow control

System	Colour	Length	Width	Height	Material	Mass	Catalogue number
63 / 75 / 90 mm / FLAT 500	Black	315 mm	115 mm	40 mm	ABS	0.2 kg	52040010000W
	White	315 mm	115 mm	40 mm	ABS	0.2 kg	52040020000W
	Silver	315 mm	115 mm	40 mm	ABS	0.2 kg	52040030000W

● RADIAL SYSTEM 63 mm / 75 mm / 90 mm

● FLAT 500 SYSTEM

ARIA CONNECT and ARIA FLAT 500 system components (available separately)



**63 mm distribution
box body**

Catalogue number
52414100100W



**75 mm distribution
box body**

Catalogue number
52410100100W



**90 mm distribution
box body**

Catalogue number
52413100100W



**63 / 75 / 90 mm
plenum box body**

Catalogue number
52410500100W



**4 x 63 mm module
for plenum box /
distribution box**

Catalogue number
52414000100W



**3 x 75 mm module
for plenum box /
distribution box**

Catalogue number
52410300100W



**2 x 90 mm module
for plenum box /
distribution box**

Catalogue number
52413000100W



**Linear plenum
box body**

Catalogue number
52410500400W



**End plug for plenum /
distribution box**

Catalogue number
(63 mm) 52414200100W
(75 mm) 52001000100W
(90 mm) 52413200100W



**Distribution box
cover – universal**

Catalogue number
52410400100W



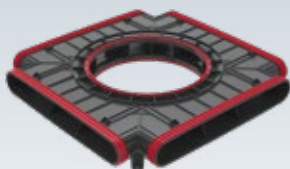
**Double-socket ducting
connector with a set
of 2 gaskets**

Catalogue number
(63 mm) 52011600100W
(75 mm) 52011200100W
(90 mm) 52011500100W



**Gasket for
radial ducting**

Catalogue number
(63 mm) 52011700100M
(75 mm) 52002000100M
(90 mm) 52011400100M



**Flat distribution
box body**

Catalogue number
54013700100W



**Flat plenum
box body**

Catalogue number
54013800100W



**Linear plenum
box body**

Catalogue number
54013800400W



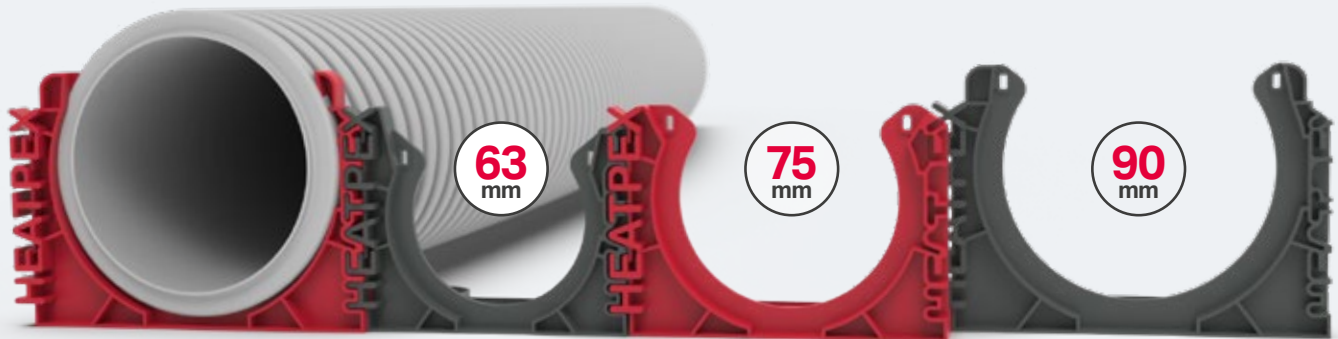
**Gasket for
flat ducting**

Catalogue number
5000000014M

● RADIAL SYSTEM 63 mm / 75 mm / 90 mm

Mounting accessories

Simple and quick clip-on connection



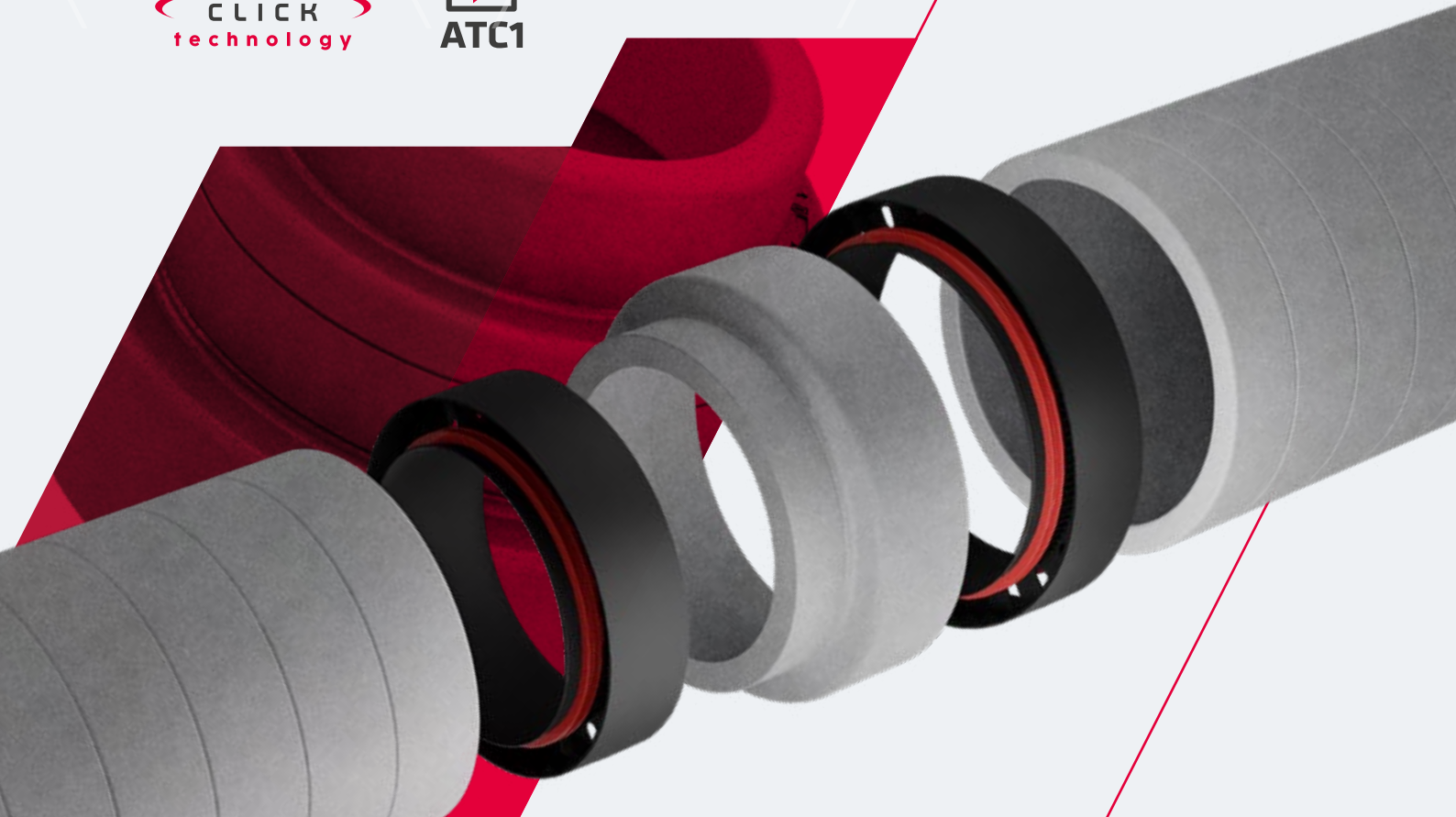
Type	Name	Catalogue number		
	Ventilation duct cutter – 63 mm	52011800100W		
	Ventilation duct cutter – 75 mm	52011900100W		
	Ventilation duct cutter – 90 mm	52012000100W		
	Ventilation duct clips Red – 63 mm	48 x 83 x 66 mm	10 pieces	52012401000W
	Ventilation duct clips Grey – 63 mm		100 pieces	52012410000W
	Ventilation duct clips Red – 75 mm	48 x 95 x 66 mm	10 pieces	52012301000W
	Ventilation duct clips Grey – 75 mm		100 pieces	52012310000W
	Ventilation duct clips Red – 90 mm	48 x 108 x 76 mm	10 pieces	52012501000W
	Ventilation duct clips Grey – 90 mm		100 pieces	52012510000W
	Ventilation duct clips Red – 90 mm	48 x 108 x 76 mm	10 pieces	52012101000W
	Ventilation duct clips Grey – 90 mm		100 pieces	52012110000W
	Ventilation duct clips Red – 90 mm		10 pieces	52012601000W
	Ventilation duct clips Grey – 90 mm		100 pieces	52012610000W
	Ventilation duct clips Red – 90 mm	48 x 108 x 76 mm	10 pieces	52012201000W
	Ventilation duct clips Grey – 90 mm		100 pieces	52012210000W

Red and grey clips are used to distinguish between supply and extract ducts.



ARIA ADURO insulated mass flow ductwork for heat recovery installations

UNIVERSAL SYSTEM





Discover how **ARIA ADURO** delivers peace of mind and comfort

Insulated mass flow ductwork for heat recovery: **ultra-lightweight, extremely durable, highly practical**

ARIA ADURO insulated ducting is **designed to transfer large air volumes between intake or exhaust terminals and the MVHR unit**, and between the unit and the air distribution box. **Manufactured from lightweight expanded polystyrene (EPS) with graphite additive, providing:**

- / Excellent thermal insulation** ($\lambda = 0.029 \text{ W/mK}$)
- / Resistance to mould, fungi and bacteria**
- / Reduced heat loss**

The material and patented **OneClick® connection system** ensure the highest airtightness class – **ATC1 (EN 17192)**, verified by independent laboratory testing. ARIA ADURO is up to **9 times lighter than traditional metal duct systems**, simplifying transport and installation.





ATC1

HIGHEST AIR TIGHTNESS CLASS

Highest airtightness

Premium materials, patented OneClick® connection system and optimised component design ensure the **highest airtightness class – ATC1** in accordance with **PN-EN 17192**, verified by independent laboratory testing. **Up to 3 times higher airtightness** compared to Class D systems. High airtightness is achieved thanks to the ARIA ADURO duct design – a **monolithic single-piece body combined with a gasket-sealed connector**. Low-profile connectors do not increase overall installation diameter.

* When installing ARIA ADURO in cold zones such as unheated attics (ambient temperature below 0°C), additional insulation of the entire system is recommended to prevent condensation. Minimum recommended additional insulation thickness: 50 mm. Final insulation thickness should be determined according to the local climate zone.

High thermal insulation

$\lambda = 0.029$ (W/mK)

ARIA ADURO is manufactured from **lightweight, durable EPS with graphite additive, providing excellent thermal performance.**

Graphite-enhanced structure ensures:

- / Significant **improvement in thermal insulation** ($\lambda = 0.029$ W/mK)
- / **Resistance** to mould, fungi and bacteria
- / **Reduced heat loss**
- / **Protection** against internal and external condensation
- / Compared to metal ducts insulated with mineral wool, ARIA ADURO offers **substantially improved insulation efficiency.**





Universal system

3 diameters: 125 mm / 160 mm / 200 mm



Reducer with cut-to-size steps for 125 / 160 / 200 mm



Original mounting brackets for quick installation

Fix the patented bracket to the surface, position the duct and secure it with the clamp. **The lightweight construction** reduces the number of fixing points required. **Modular design** allows brackets to be connected in series or side-by-side, enabling **parallel routing of multiple ducts**. One **bracket fits all diameters: 125, 160 and 200 mm**.



5 cm

Effortless cutting – simple setup

Integrated 5 cm cutting guides enable precise length adjustment of the 1 m duct. The **17 mm wall thickness** allows easy cutting with a standard utility knife.

2x

faster installation

ARIA ADURO is **up to 9 times lighter** than traditional metal duct systems. Lightweight construction **simplifies installation in walls** and suspended ceilings – **reducing installation time by up to 50%**.

2x

lower airflow resistance compared to flexible ducting

Rigid construction with **smooth internal surface eliminates deformation during installation** and significantly reduces airflow resistance. **Up to twice lower resistance** compared to flexible ducts – ensuring quieter operation and lower energy consumption.

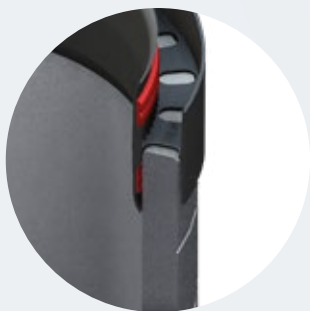


Proven solution: OneClick® technology

Based on the proven OneClick® system used in HEATPEX ARIA air distribution systems. **Fast, secure and tool-free connection of ARIA ADURO components.**



ARIA ADURO system components



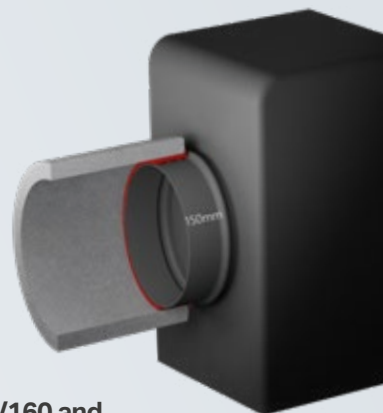
Connector

Push-fit connector with **integrated gasket**. **Low-profile design** does not increase overall installation diameter. Inspection openings indicate correct engagement and secure connection.



Mounting bracket with clamp

Bracket with integrated clamp for secure duct fixing.



150/160 and 180/200 adapters

Adapters for connection of Ø 150 and Ø 180 recuperator spigots to Ø 160 and Ø 200 ADURO ducts.



Ducts

1 m rigid duct sections (single-piece construction). Manufactured as monolithic elements for increased strength and reduced risk of damage. **3 diameters.**

45° elbow

Rigid 45° elbow for directional changes.

Reducer

for Ø 125 / 160 / 200 mm systems.

Tee

T-branch fitting for system branching.

Damper

Manual airflow control damper.

ARIA ADURO system components and accessories

ARIA ADURO system components		Diameter		Length	Material	Class tightness	Number catalogue
		internal	external				
		mm	mm	mm			
Pipe 1 m		125	159	1000	EPS	ATC1	52912500100T
		160	194				52916000100T
		200	234				52920000100T
Bend 45°		125	159	213	EPS	ATC1	52912590100T
		160	194	226			52916090100T
		200	234	240			52920090100T
Tee		125	159	380	EPS	ATC1	52912580100W
		160	194				52916080100T
		200	234				52920080100T
Damper		125	159	250	EPS, galvanized steel	ATC1	52912560100W
		160	194				52916060100W
		200	234				52920060100W
Connector		125		70	PP, EPDM	ATC1	52912570100W
		160					52916070100W
		200					52920070100W
Reducer		125/160/200		167	EPS	ATC1	52010200100T
Mounting bracket		125/160/200		300	PP, nylon	ATC1	52010100100W
MVHR unit connection adapter		150/160		40	EPDM	ATC1	52011600100T
		180/200		40	EPDM	ATC1	52011700100T

ARIA ADURO system accessories		Diameter	Length	Material	Number catalogue
		mm	mm		
Flexible duct silencer		125	1000	Aluminum-polyester jacket, galvanized steel, EPDM gaskets, glass wool insulation	52010300100T
		160			52010400100T
		200			52010500100T
Air intake / outlet grille - hooded		125	-	Stainless steel	52010600100T
		160			52010700100T
		200			52010800100T
Air intake / outlet grille - flat		125	-	Stainless steel	52010900100T
		160			52011000100T
		200			52011100100T

Need more
information?

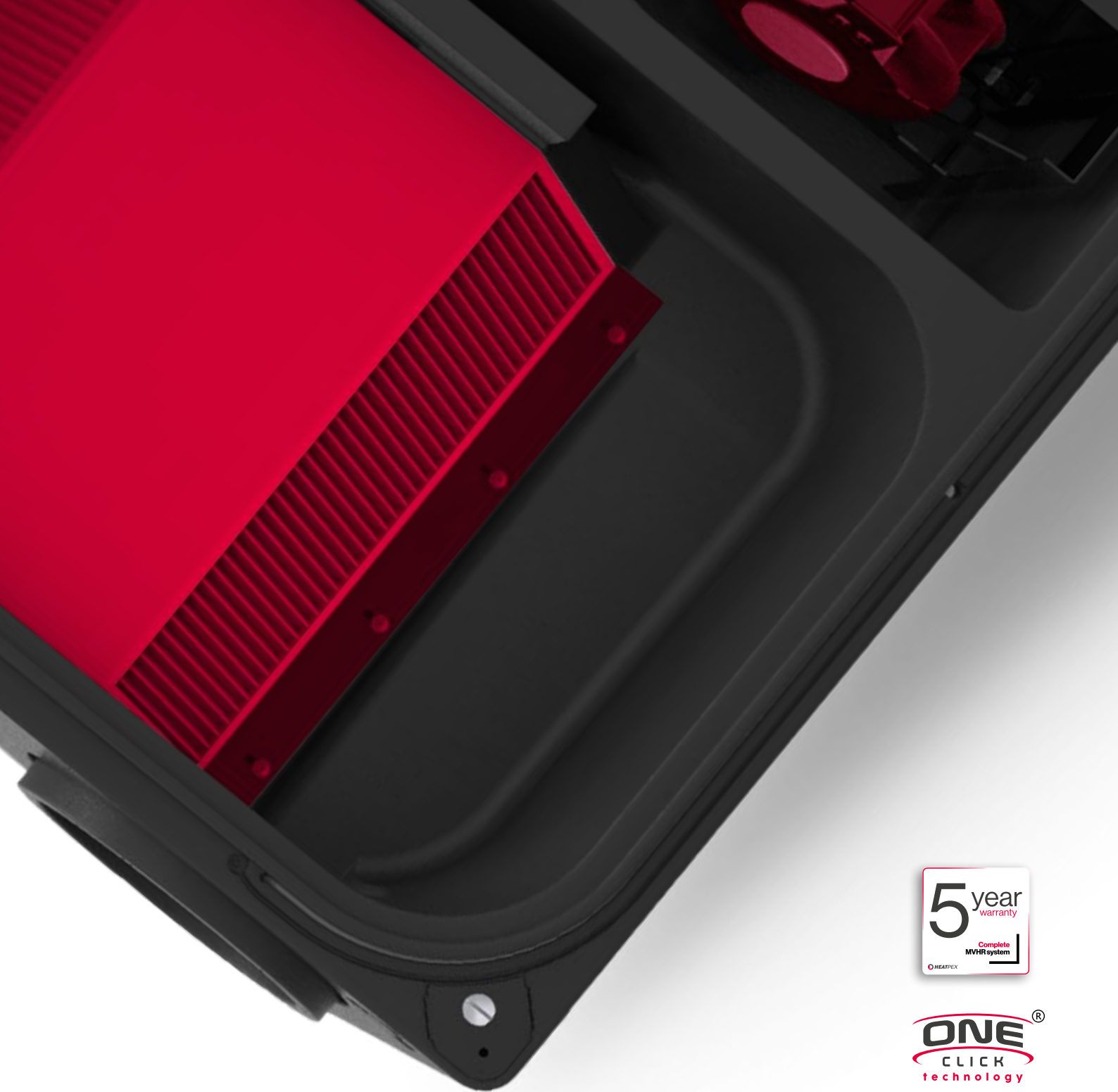


EMAIL

sales@heatpex.pl

OR VISIT

> heatpex.pl



> heatpex.pl

Heatpex Sp. z o.o. Chrzanowskiego 11, 80-278 Gdańsk, Poland
tel. +48 661 693 697, e-mail: sales@heatpex.pl

